

LOCATION MAP



SPACIOUS APARTMENTS
FOR COMFORT LIVING

Some of our landmark projects



Ayodhya Bypass



Hamidia Road



Hamidia Road



Ayodhya Nagar



Ashoka Garden



Patel Nagar



Patel Nagar



VILLAS FOR ELITE LIVING
MAIN HOSHANGABAD ROAD



Site Office: Vardhman Celestia, Vardhman Green Enclave,
Ayodhya Bypass Road, Bhopal (M.P.) 462041
Office: 130, Malviya Nagar, Bhopal
Ph.: 0755 - 2675707, 2675770



All perspectives and dimensions are indicative and may change. Developer reserves the right to amend the plans as required. Information provided in the brochure will in no case form part of any agreement and is subject to change without prior notice at the sole discretion of the developer. All furniture and extra accessories displayed in the plans have aesthetic sense only and will not be covered in the scope of supply.

RERA NO.- P-BPL-25-5827



THE EVERLASTING LEGACY

**WE MAKE QUALITY A MATTER OF PRIDE,
RAISING THE BAR WITH EACH PASSING DAY.**

Vardhman Constructions aims to provide the best real estate options to society and our associates, recognizing that the quality of services is the foundation for any successful business organization. With a track record of delivering successful and cost-effective projects in Bhopal for over **32 years**, we have completed **17+ projects** and have many ongoing projects, serving over **3000+ satisfied families**. VARDHMAN CONSTRUCTIONS has surged to become a prominent Real Estate Group in Bhopal. We strive to redefine traditional business practices by offering a reputable, trustworthy name in real estate. Our team of highly qualified and experienced professionals provides an integrated, one-stop real estate solution, covering major locations in Bhopal. Our mission is to provide an awe-inspiring experience to our stakeholders while maintaining the highest standards of professional, ethical, and environmental practices. This is evident in our latest project, Vardhman Celestia, which reflects our commitment to excellence.





BUILDING LIVES, NOT JUST HOMES...



WHEN FOREVER STARTS WITH FOUR WALLS

Imagine a place where the joy of having it all is palpable on the faces of the people you love. That is exactly the kind of life and home Vardhman Celestia gives you.

Nestled in the heart of Bhopal, Vardhman Celestia is surrounded by picturesque landscapes, top-notch amenities and the unprecedented legacy of Vardhman Constructions. Adding animation to the surroundings, this thoughtfully planned project is infused with hues of green on all the corners. The township's beautiful plantation and garden areas enhance the serenity of the landscape.

We proudly present to you our 3 BHK, 2 BHK, 1 BHK and Studio Apartments, all suited to complement your suave, opulence, and magnificence.

———— TOTAL PROJECT AREA - APPROX. 1 ACRE ————

———— 66 (2/3BHK) & 36 STUDIO APARTMENTS/1 BHK ————





A LOCATION WORTHWHILE...

Vardhman Celestia is located in the premier location of Ayodhya Bypass, Bhopal, where everything you can possibly need is around the corner. From hospitals to hospitality, luxuries to necessities, you are never away from city life, yet owning your perfect piece of heaven.

There is more to it...

Striking a perfect equilibrium of convenience and comfort, the Vardhman Celestia is situated near all the major landmarks of the city.

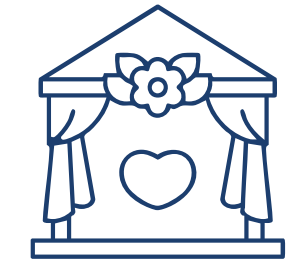
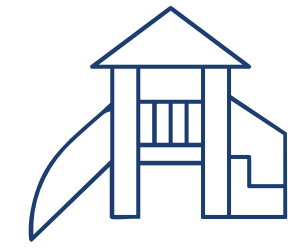
 10-lane wide road ensuring seamless connectivity

 Daily conveniences like D-Mart within 1 km

 Hospitals and malls within 1 km radius

 Airport and Railway Station just 15 minutes away

 Upcoming Vande Bharat Coach Factory adding future value



MASTERING THE JOY OF LIVING



EVERLASTING EVERYDAY

After all, it's the finer things in life that make the world of a difference...

At Vardhman Celestia, perfection lies in the details. That is why our team of professional architects and planners meticulously designed a wide range of amenities that not only put your mind at ease, but your heart too.



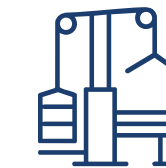
Grand Entrance Foyer

From the moment you step inside, you're greeted with a sense of arrival. The grand entrance foyer feels warm, welcoming, and just a little bit luxurious.



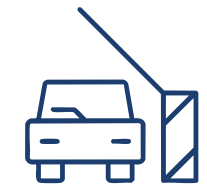
Children's Play Zone

A space just for laughter and play. Here, kids can run free, make friends, and create memories every day.



Fully Equipped Gym

No commute, no excuses. Just the latest fitness gear to keep you moving, right where you live. The well equipped gymnasium at Vardhman Celestia is a body temple for all fitness freaks.



Secured Campus with RFID Boom Barriers

Ensuring a safe and secured campus with automatic RFID Boom Barriers at entrance.



Landscaped Gardens & Terrace Garden

Green escapes right at your doorstep, perfect for quiet morning walks or a chat with neighbours under the trees. Your private piece of the sky. Enjoy fresh air, lush greenery, and city views that never get old.



RFID Key Access for Residents

No fumbling for keys. Just a quick tap and you're home, safe, secure, and stress-free.



Leisure Lounge

A cosy corner to read, relax, or share a cup of coffee with someone who feels like family.



Community Gathering Hall

A place where neighbours become friends. Celebrate festivals, birthdays, or simply life together.



EV Charging Stations

Conveniently placed EV Charging stations hassle free charging of your Two Wheeler.



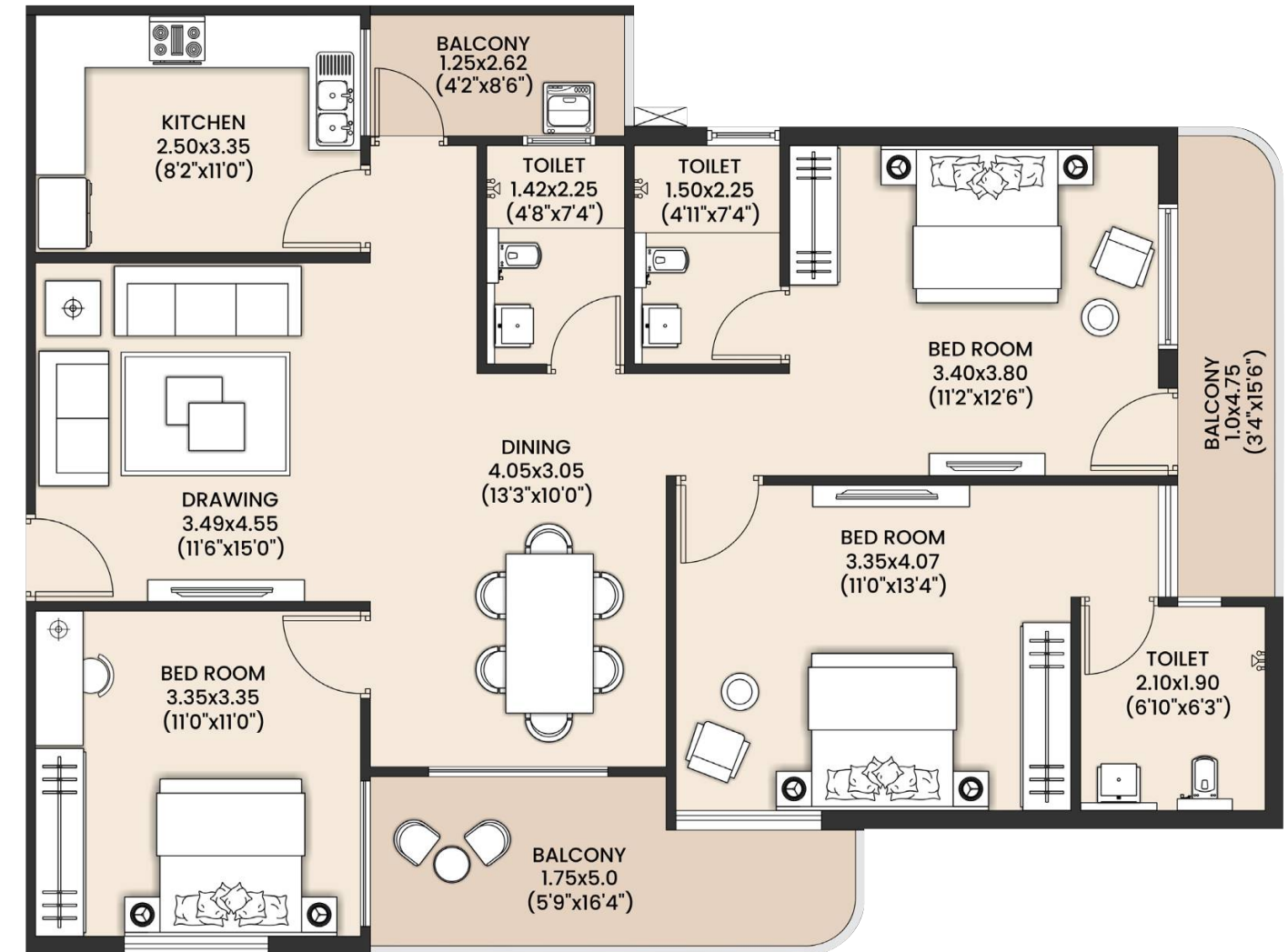
Indoor Sports Lounge

Whether it's a quick game after work or weekend fun, this is where friendly matches and big laughs happen.

ENJOY THE SERENE SKY
AT THE TRANQUILISING
TERRACE GARDENS



3BHK
BUILTUP AREA - 1221 sq.ft.

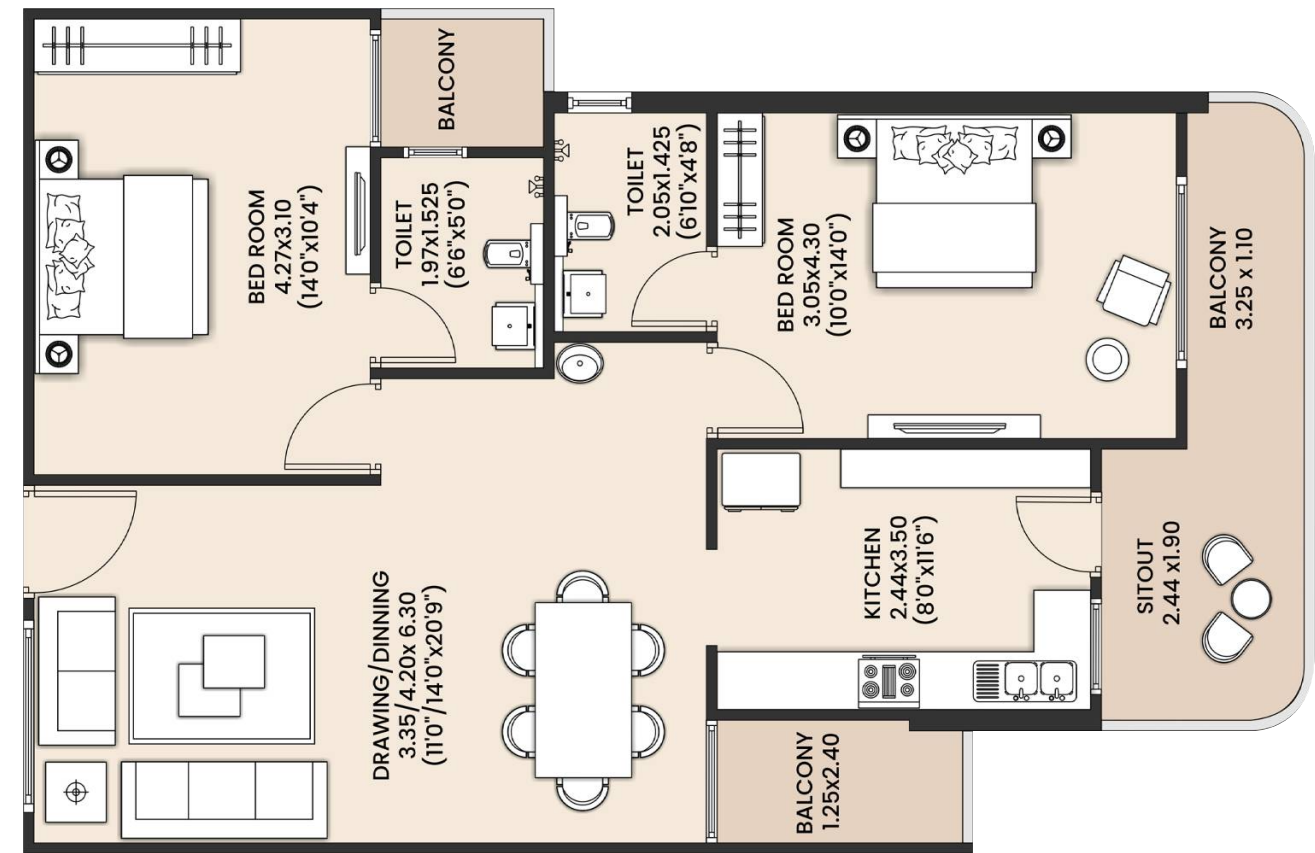




YOUR GREATEST
ACHIEVEMENT
IS CREATING
A LIFE FULL OF
POSSIBILITIES!

2BHK

BUILTUP AREA - 936 sq.ft.








WORLD-CLASS HOMES FOR GLOBAL CITIZENS

The homes at Vardhman Celestia are not just ordinary abodes, they are a reflection of our unwavering dedication to creating a space that is all-welcoming, with large, welcoming windows that bathe in the glorious sunlight and wind into your spacious rooms made for the unprecedented living experience. Vardhman Celestia is not just bricks and beams; it's a home made of hopes and dreams.

Key highlights of Vardhman Celestia

-  Modern, sleek design.
-  Smart layouts for optimal space.
-  Spacious Balconies with Suave Designer Ceilings.
-  Premium finishes and fixtures.
-  Large windows for light and air.
-  Digital Locking System for entrance in every unit.

A GREAT INVESTMENT OPPORTUNITY

Owning a home at Vardhman Celestia is not just a dream come true, but also a smart investment decision. With the city's real estate market on the rise, Vardhman Celestia location is an added advantage for an investment that promises high returns. Our homes are designed to appreciate in value, making them a sound investment for years to come.



LUSH TROPICAL
LANDSCAPES
TO LET YOU FEEL
ONE WITH NATURE

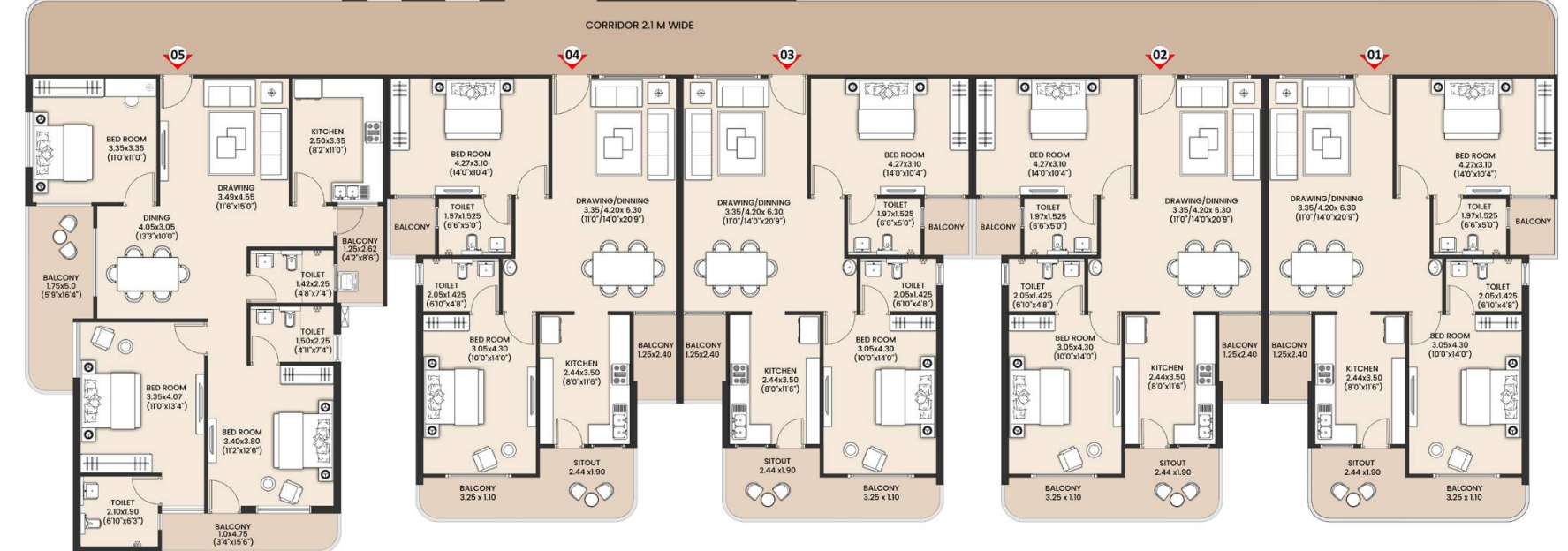
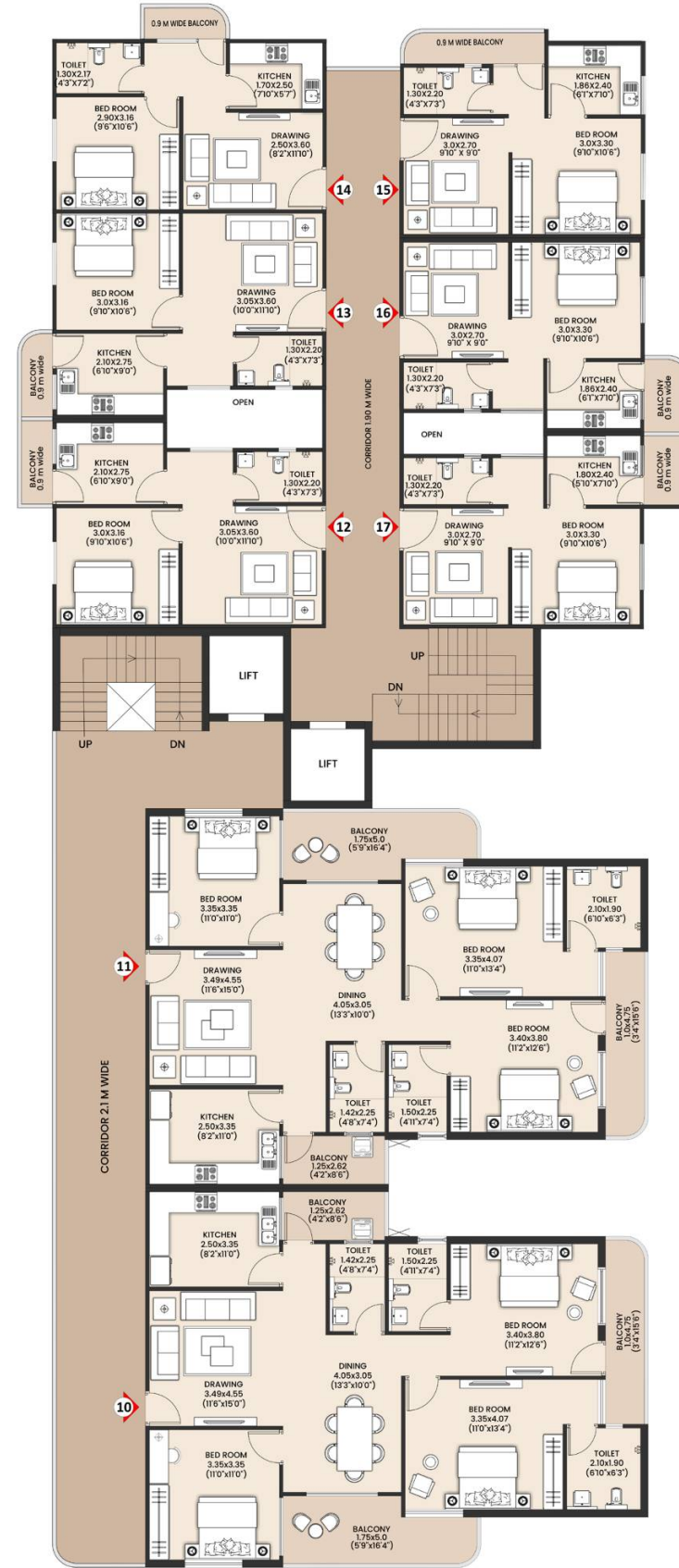


CLUSTER LAYOUT PLAN








vardhman
CELESTIA

AYODHYA BYPASS, BHOPAL





-  01 CAR PARKING
-  02 MAIN GARDEN
-  03 KIDS PLAY ZONE
-  04 OPEN PLAYING COURT
-  05 ENTRANCE FOYER

The Layout

BESPOKE
AMENITIES.
ABSOLUTE
CONVENIENCE.